

# Second Administrative Level Boundaries **SALB**



Geospatial Information Section  
& Statistics Division

- Global perspectives



### **Rio + 20 The Future We Want (GA, RES/66/288)**

...reliable geospatial information in support of comprehensive hazard and risk assessment...



### **2030 Agenda for Sustainable Development (GA, RES/70/1)**

...promoting a framework for disaggregated data to link between statistics and geographic location...



### **UN-GGIM (Report E/C.20/2016/5/Add.1)**

...highlighted administrative boundaries as a priority “core global fundamental geospatial data theme”...



### **UNEGN**

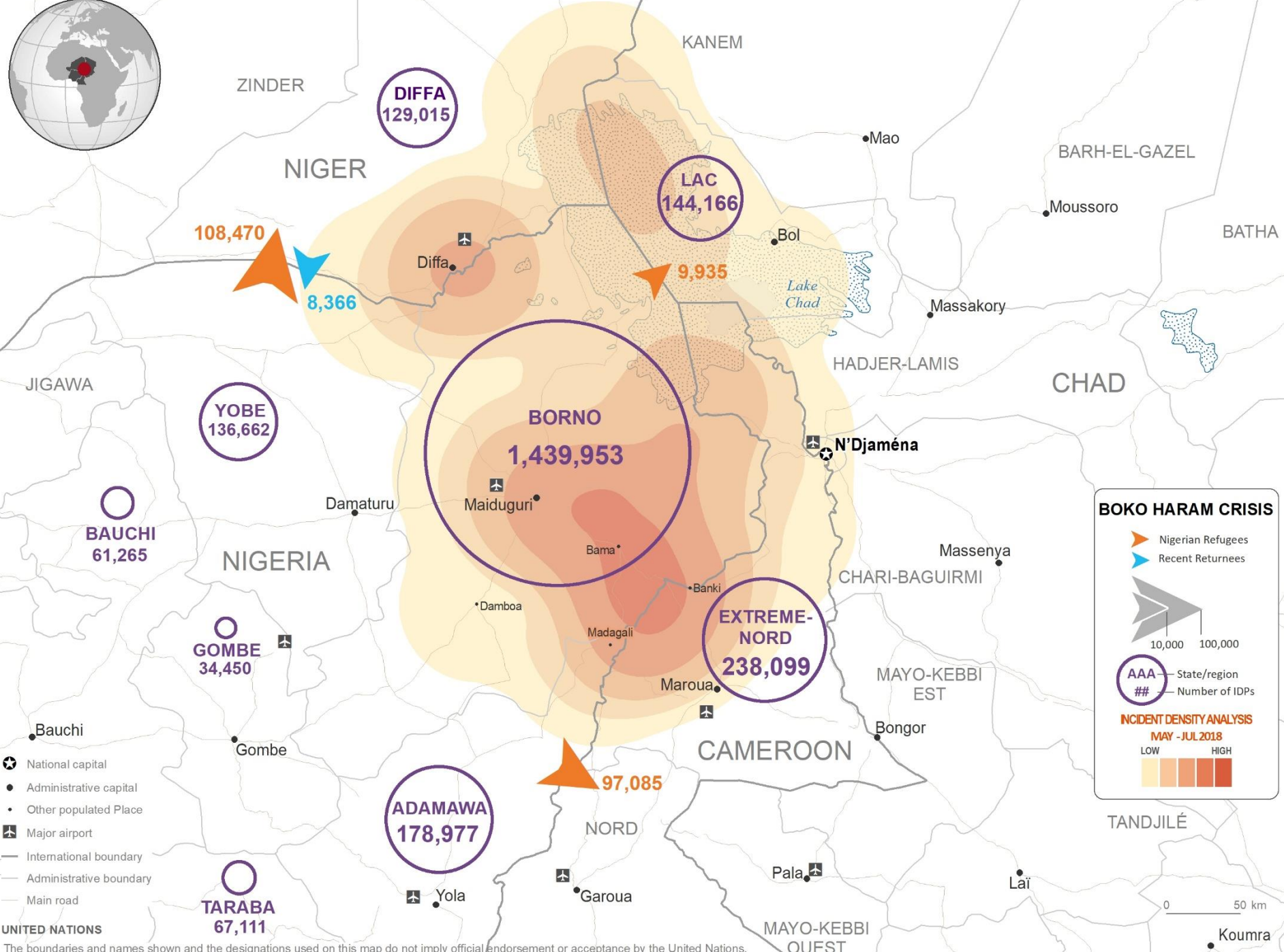
...promoting the recording of locally-used names reflecting the languages and traditions and the use of these names internationally...





**Cyclone Idai**  
**Mozambique**  
OCHA Saviano Abreu





- ★ National capital
- Administrative capital
- Other populated Place
- ✈ Major airport
- International boundary
- Administrative boundary
- Main road

**UNITED NATIONS**  
 The boundaries and names shown and the designations used on this map do not imply official endorsement or acceptance by the United Nations.

**BOKO HARAM CRISIS**

- Nigerian Refugees
- Recent Returnees
- 10,000 100,000
- AAA** — State/region
- ##** — Number of IDPs
- INCIDENT DENSITY ANALYSIS**  
MAY - JUL 2018
- LOW HIGH

0 50 km

Koumra

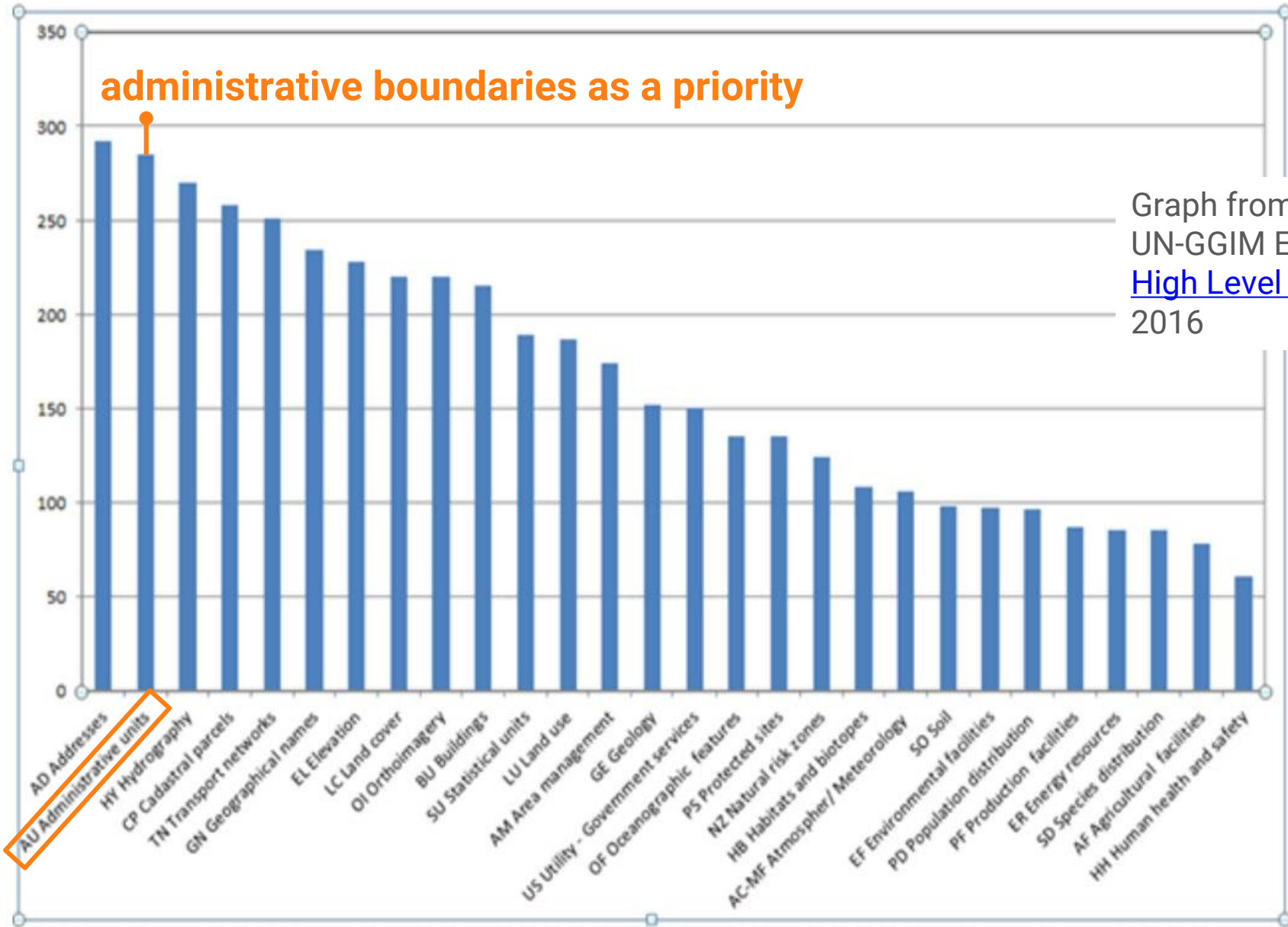




**National Population Census  
South Sudan**  
UN Tim McKulka

# administrative boundaries as a priority

Graph from:  
UN-GGIM Europe  
[High Level Forum](#)  
2016







# Functional Areas

Functional Areas are the geographical extent of administrative, legislative, regulatory, electoral, statistical, governance, service delivery and activity management areas.



- Enable users can discover, consume, integrate & analyze
  - based on standardized global geospatial data
  - produce cross-country analysis (disasters, socio-economics, environment)
  - enable in-country operations/support with reliable data
  - generate consistent bi-products and analysis
  - facilitate disaggregated data link between statistics and geographic location
  - provide authoritative data to the international community, researchers, cartographers and statisticians



- Current situation on administrative boundaries
  - No reliable global dataset on common geographies
  - Few pan-national or regional reliable geospatial
  - Few standard and harmonized dataset
  - a lot of unstructured and unreliable data available
  - many places to retrieve data
  - from unknown sources
  - many fragmented approaches

How can the geospatial community provide **authoritative common geographies and names globally** so users can discover, use, analyse and integrate different datasets ?

- Programme overall goals

Advocate for the work of National Mapping Agencies

Promote geospatial information while ensuring national ownership

Facilitate the availability of global and authoritative geospatial data

Promote the standardization of geospatial data and names

Enable the international community



- Implementation objectives

The Second Administrative Level Boundaries (SALB) initiative aims at compiling data on administrative boundaries and names from authoritative source such as the official National Geospatial Information Authorities.

In this context SALB objectives are:

- i. compile authoritative **GIS dataset worldwide for administrative boundaries** and names for level 1 and 2, at 1million scale; and
- ii. identify and maintain **point of contacts of the National Geospatial Authorities** on administrative boundaries and names.
- iii. maintain an overview of **historical changes of national administrative units**

- Benefits of SALB



Institutional approach



Common geography



Global coordinate system



Uniform scale



Common data specifications



Standard encoding format



Common dissemination platform

National ownership

Administrative boundaries/units

WGS84

1 million

Latin names and attributions

.shp and .gml

website outreach/advocacy



- Programme process



Note Verbale to  
Permanent Missions

ADVOCACY &  
AWARENESS



National Mapping  
focal point

CUSTODIAN



Submission of  
national data

NATIONAL  
OWNERSHIP



Data processing &  
standardization

NAME & DATA  
STANDARDS



Published on  
unsalb.org


GLOBAL &  
AUTHORITATIVE





Mongolia | Second Administrative Level Boundaries

https://www.unsalb.org/data/mng



**UNITED NATIONS**

Second Administrative Level Boundaries  
Geospatial Information Section & Statistics Division

HOME | METHODOLOGY | **DATA** | NEWS & STATUS | MISSION

Find Country...

## Mongolia


» Data

### National Mapping Authority

Agency of Land Affairs, Geodesy and Cartography of Mongolia

<https://zasag.mn/en/m/alacg>

### SALB Datasets

Dataset
2002/01/01
 Validated (20.04 MB)

### NEWS AND STATUS

[Secretary-General addresses a message at the first World Geospatial Information Congress](#)

The first United Nations World Geospatial Information Congress held in Deqing, Zhejiang Province, China,...

[Presentation at the UN-GGIM Americas](#)


The 5th Session of the Regional Committee of UN-GGIM Americas was held within the framework of the...


[Side Event on Fundamental Geospatial Data Themes](#)

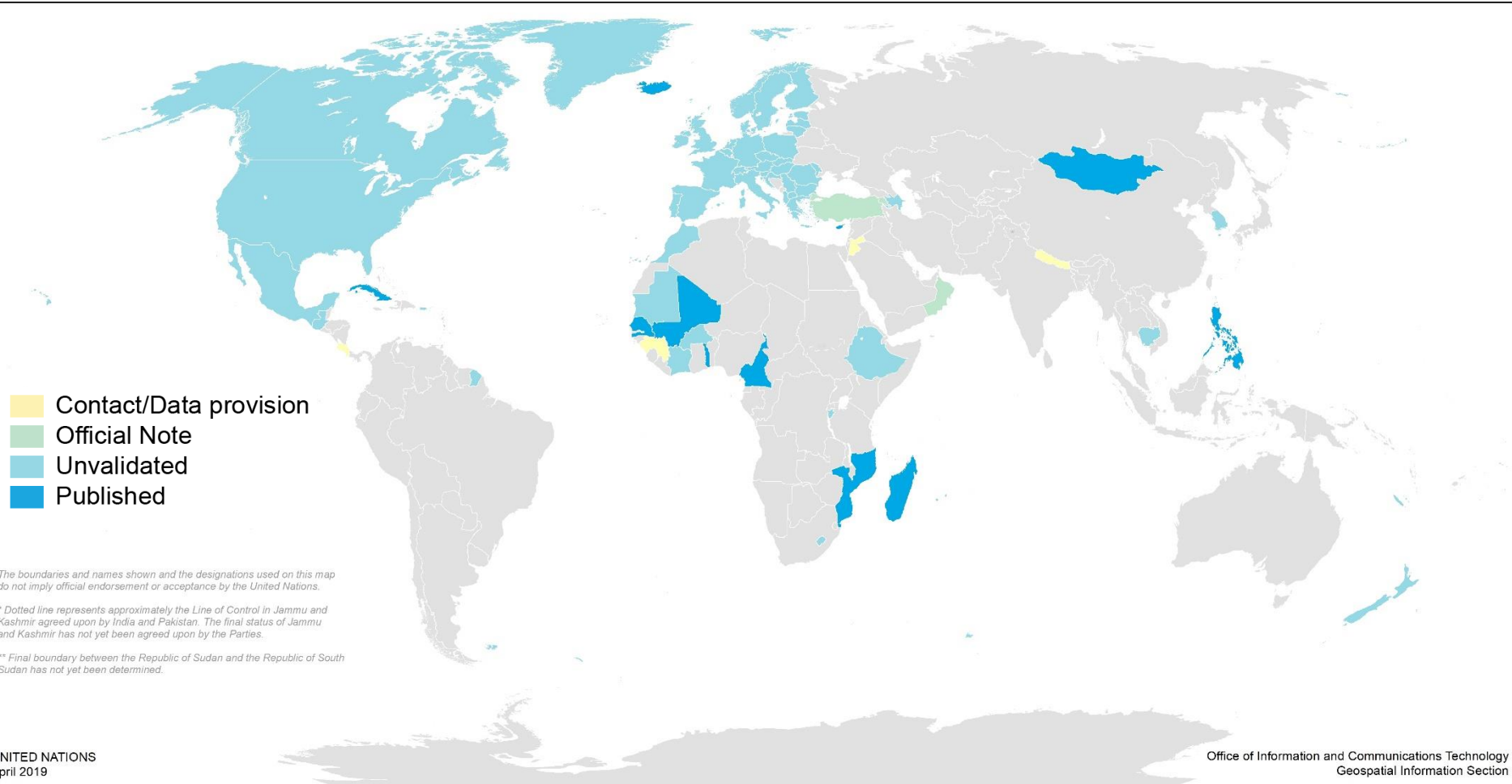
The Working Group on Fundamental Geospatial Data Themes convened a...

[More...](#)

### @UNGGIM TWEETS

 UN-GGIM Retweeted

 **UNGGRF**  
@UNGGRF



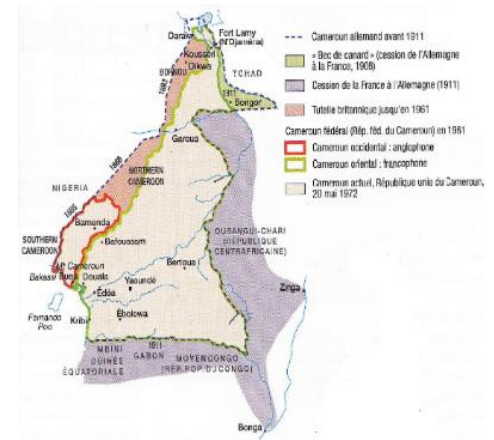
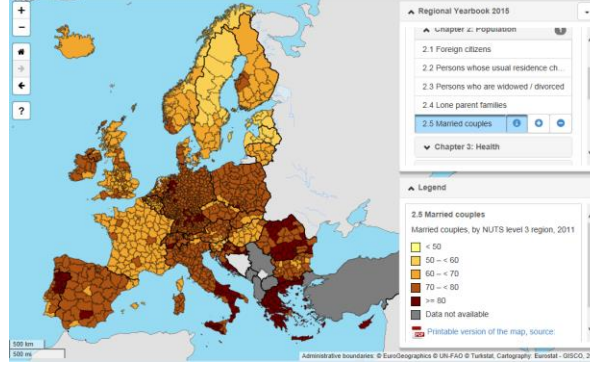


## ■ Challenges

- Needs further participation from Member States
- Slow process
- Lack of resources of the programme

## ■ Opportunities

- Ongoing processing of Europe data from EuroGeographics
- New partnership with PAIGH to reach out in the Americas
- Collaboration with UNGEGN and UN system



SDG  
MONITORING



INTEGRATION  
WITH STATISTICS



GEOGRAPHIC  
NAMES



ADMINISTRATIVE  
BOUNDARIES



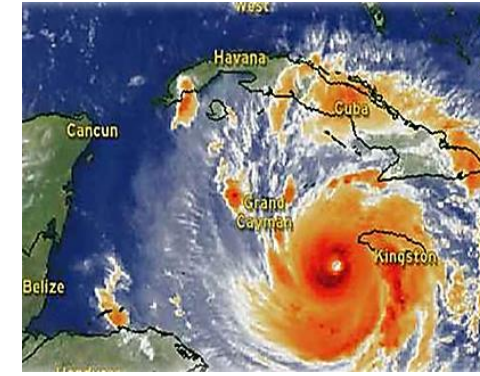
GEODETTIC  
FRAMEWORK



STANDARDS



RISK &  
DISASTERS



# SALB



[www.unsalb.org](http://www.unsalb.org)  
[salb@un.org](mailto:salb@un.org)

**Kyoung-Soo Eom**

Chief Geospatial Information Section  
[eom@un.org](mailto:eom@un.org)

**Guillaume Le Sourd**

Geospatial Information Officer  
SALB Programme  
[lesourd@un.org](mailto:lesourd@un.org)